



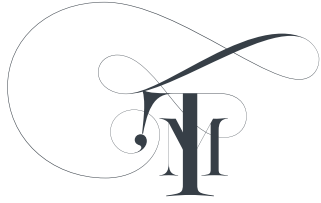
TE MATA HOUSE

Wedding Packages





LYS 41
50ml 1.7 FL.OZ. e
eau de parfum / vaporisateur
natural spray
Labelled: Holly & Jason
19/11/22
Giv: Holly
LE LABO



A WEDDING AT TE MATA HOUSE

Walk down an aisle with crab apple trees, wed under the wisteria pergola, or pledge your love in a lavender field.

A private residence rich in history and beauty, Te Mata House is available for a limited number of very special weddings each year.

We work exclusively with one of New Zealand's most highly regarded wedding planners – One Fine Day Weddings – to create an occasion you and your loved ones will never forget.

Our landscaped grounds and garden beds abundant with Sally Holmes and Pierre de Ronsard roses provide many picturesque locations for your ceremony, and a magnificent marquee helps create a delightful ambiance for the reception.

With luxury accommodation on-site for the

wedding party's use, The Cottage is the perfect place to prepare, and to honeymoon. There are many other stunning properties nearby for guests to stay at so they too can enjoy a full Hawke's Bay experience.

One Fine Day Weddings will work closely with you to design a beautiful and memorable wedding like no other.* We look forward to hosting your wedding at Te Mata House.

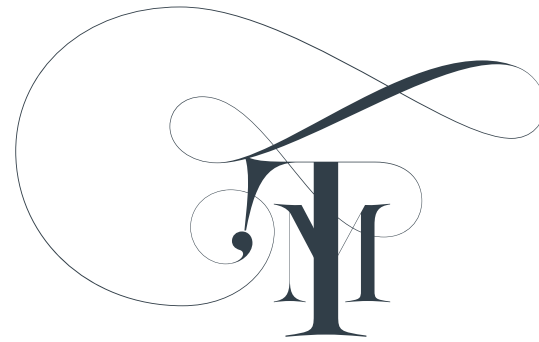
*In order to maintain the integrity of this heritage home and its grounds, all chosen suppliers must be pre-approved by the property owner.











TE MATA HOUSE

Our Packages



TOGETHER WITH LOVE
FAMILY

INVITE YOU TO CELEBRATE
THEIR WEDDING ON

details

TRANSPORT
of parking at
to use our
rtation





GOLD PACKAGE

The stunning backdrop of this historic home, combined with the beautiful Paul Bangay-designed grounds and the surrounding vines give your wedding guests a rare opportunity to enjoy this unique property in Hawke's Bay.



Add to your wedding experience at Te Mata House by including the unique accommodation option. The Cottage is a purpose-built, architecturally designed guesthouse delivering an oasis of calm and light. The Cottage is a perfect space for your bridal party to get ready for the big day, and for the newlyweds to enjoy after the ceremony.

Inclusions:

- Exclusive use of the property grounds for three days (allows for set up and pack down)
- A levelled platform to erect your marquee on the Olympic-sized arena
- Access from 12pm on the set-up day
- Exclusive use of the garden for a post-wedding event from 11am-2pm
- Property manager
- The Cottage – luxury accommodation for two nights. Sleeps up to four (a rollaway bed is available for a fifth guest if required)

- Security guard for up to 8 hours
- Driveway lighting for guest access
- A guest list up to 250 people
- Ceremony and Reception celebrations till 12am on day of wedding
- Helicopter landing if required

Exclusions:

- Marquee and all associated items (including but not limited to) furniture, lighting, toilets, catering, photographer, celebrant, hair, make up, flowers, cutlery, crockery
- Wedding Planner (must engage One Fine Day Weddings)
- Suppliers (all suppliers must be pre-approved via the wedding planner)
- Some associated event consents
- Use of the Homestead

INVESTMENT NZ\$30,000 + GST





SILVER PACKAGE

The stunning backdrop of this historic home, combined with the beautiful Paul Bangay-designed grounds and the surrounding vines give your wedding guests a rare opportunity to enjoy this unique property in Hawke's Bay.



Inclusions:

- Exclusive use of the property grounds for three days (allows for set up and pack down)
- A levelled platform to erect your marquee on the Olympic-sized arena
- Access from 12pm on the set-up day
- Exclusive use of the garden for a post-wedding event from 11am-2pm
- Property manager
- Security guard for up to 8 hours
- Driveway lighting for guest access
- A guest list up to 250 people
- Ceremony and Reception celebrations till 12am on day of wedding
- Helicopter landing if required

Exclusions:

- Marquee and all associated items (including but not limited to) furniture, lighting, toilets, catering, photographer, celebrant, hair, make up, flowers, cutlery, crockery
- Wedding Planner (must engage One Fine Day Weddings)
- Suppliers (all suppliers must be pre-approved via the wedding planner)
- Luxury accommodation – The Cottage
- Some associated event consents
- Use of the Homestead

INVESTMENT NZ\$25,000 + GST





BRONZE PACKAGE

The stunning backdrop of this historic home, combined with the beautiful Paul Bangay-designed grounds and the surrounding vines give your wedding guests a rare opportunity to enjoy this unique property in Hawke's Bay.



For those wanting a small and intimate wedding experience, our Bronze package is best suited for you.

For this package, The Homestead's formal lounge can be included at an extra cost if weather conditions are poor.

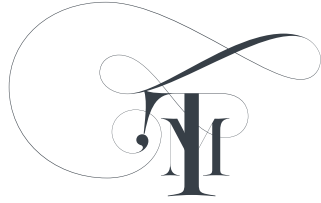
Inclusions:

- Exclusive use of the property grounds for 36 hours (allows for set up and pack down)
- Plentiful spaces in the garden for the event
- Access from 2pm the day before the event for guests staying in The Cottage
- Exclusive use of the garden for one day
- Property manager
- A guest list up to 30 people
- Ceremony and Reception celebrations till 12am on day of wedding
- Helicopter landing if required
- The Cottage - luxury accommodation for two nights. Sleeps up to four (a rollaway bed is available for a fifth guest if required)

Exclusions:

- Marquee, furniture, lighting, toilets, catering, photographer, celebrant, hair, make up, flowers, cutlery, crockery
- Wedding Planner (must engage One Fine Day Weddings)
- Suppliers (all suppliers must be pre-approved via the wedding planner)
- Some associated event consents
- Use of the Homestead*
- If the Homestead's formal lounge is required due to weather conditions, an extra NZ\$5,000 + GST is required

INVESTMENT NZ\$15,000 + GST OR NZ\$20,000 IF THE HOMESTEAD IS REQUIRED



FAQ'S

HOW FAR IN ADVANCE SHALL I BOOK?

We suggest one year if possible. This allows a good amount of time to ensure we can book preferred suppliers. It also makes the process less stressful for you.

HOW MUCH IS THE DEPOSIT?

The deposit required is 50% of the package price, this is non-refundable. With the balance due six weeks prior to the wedding date.

DO WE HAVE USE OF THE HOMESTEAD?

The Homestead is only available to those wanting the Bronze package and if weather is unfavourable.

CAN WE USE THE POOL?

For staying guests, the pool is available for use. However, the pool area is not available during the wedding event due to health and safety regulations.

WHAT TIME DO WEDDING GUESTS HAVE TO VACATE THE PROPERTY?

All music must cease at 11.30pm with guests departing the venue at midnight.

CAN WE HOST AN AFTER EVENT?

If you have booked the Gold or Silver packages, the grounds are available for an event the day after the wedding. The garden is available between 11am-2pm. All guests must vacate the property by 2pm.

WHAT TIME OF THE YEAR IS BEST?

The best months for weddings at Te Mata House are November and March. January and February will be considered if dates are available.

DO WE HAVE TO PAY A SECURITY BOND?

Yes, a bond of \$5,000 will be taken on day 1 of the wedding for Gold & Silver packages. A bond of \$1,000 will be taken for the Bronze package.





THE NEXT STEPS

01. GET IN TOUCH WITH ONE FINE DAY WEDDINGS
and start planning your special day

02. ARRANGE A SITE VISIT IF DESIRED
The property owner would be delighted to show you around

03. CONFIRM YOUR WEDDING DATE
Check availability and confirm your wedding date with your partner and family

04. ENSURE YOU HAVE READ THE TERMS AND CONDITIONS OF THE COTTAGE,
AND YOUR WEDDING CONTRACT

<https://www.tematahouse.co.nz/terms-andconditions-accommodation>

05. RETURN SIGNED CONTRACT + MAKE YOUR DEPOSIT PAYMENT
One Fine Day will send your contract & deposit invoice to confirm the venue





PREFERRED PROVIDERS:

These are our preferred suppliers but we are open to considering others. All chosen suppliers must be pre-approved by the property owner.

Catering

Ortons
Joll Road
Whisk

Marquee

Flagship
Twelve Tables

Furniture & Décor

Flock
Royal Laboratoire
Twelve Tables
Flagship

Florals

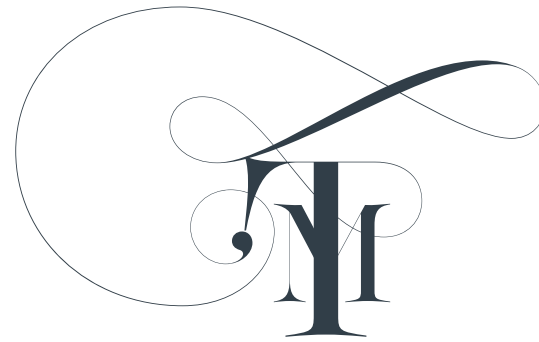
Michele Coomey Florals
Floralcentric
Botanical Lane

Toilets

Premier Loos

* All chosen suppliers must be pre-approved by the property owner

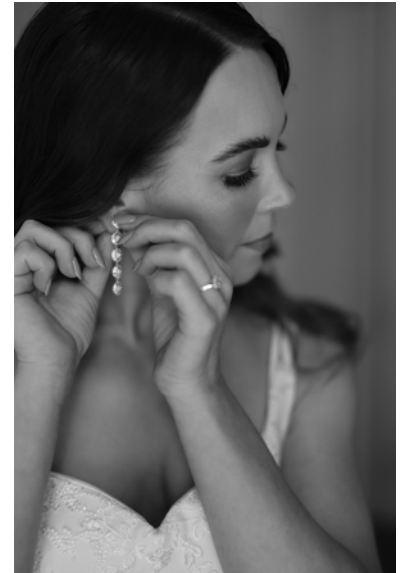




TE MATA HOUSE

The Cottage

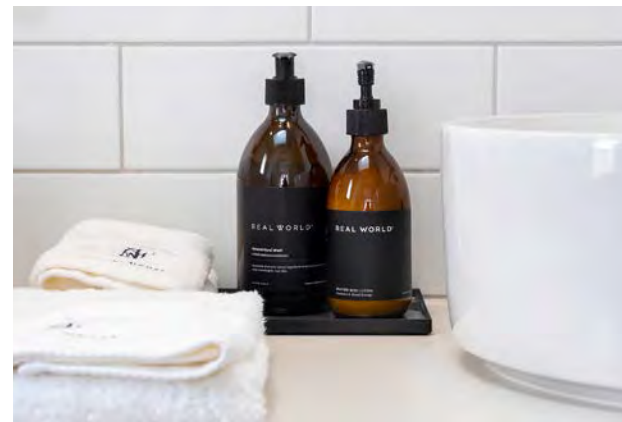


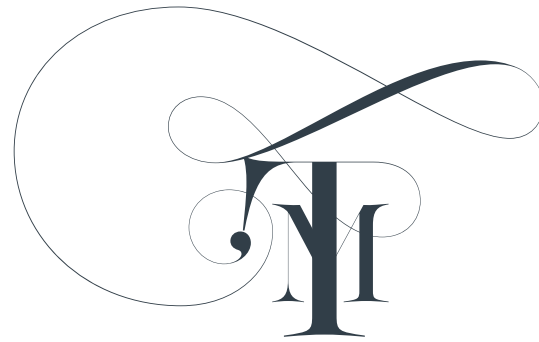












TE MATA HOUSE

The Ceremony







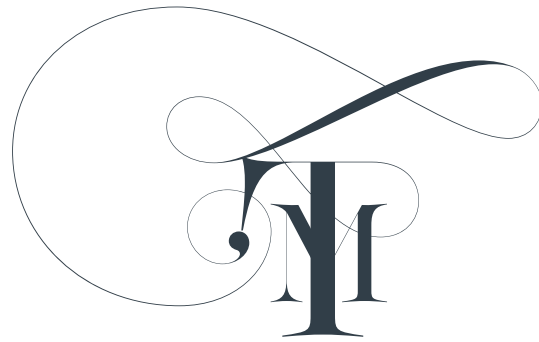












TE MATA HOUSE

The Reception





PLEASE
FIND
YOUR
SEAT







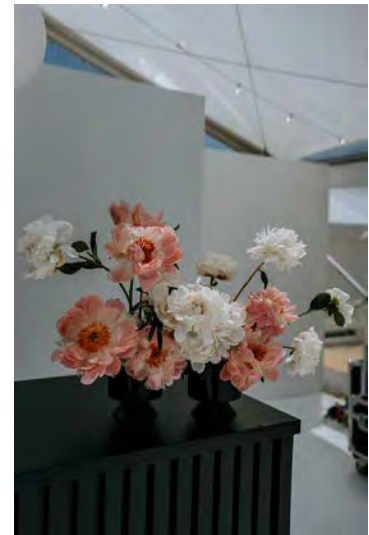
SEAT - DAVID

APPETIZERS
Crispy Fried Chicken with Lemon Aioli
Roasted Cauliflower with Lemon and Olive Oil

ENTREES
Grilled Salmon with Lemon Butter
Pan-Seared Filet Mignon with Truffle Sauce

DESSERTS
Chocolate Lava Cake with Vanilla Ice Cream
Fresh Strawberry Cheesecake











ANDREW
so glad you are here



TO EAT



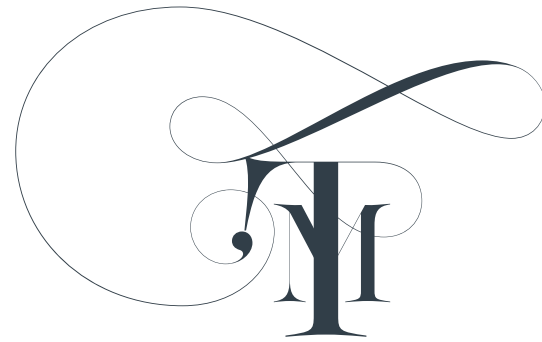
EM



LET'S
DANCE
THE NIGHT
AWAY

TO DRINK

COCKTAIL
WINE
BEER
NON-ALCOHOLIC



TE MATA HOUSE

The Property









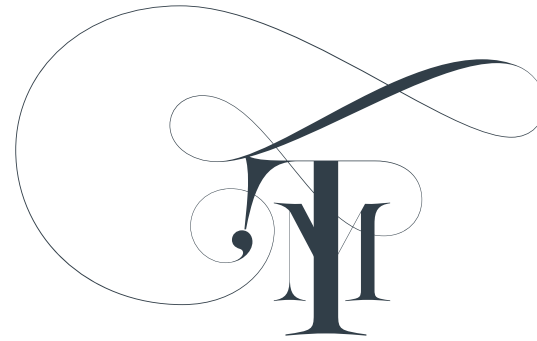












TE MATA HOUSE

Weddings

Please follow and tag us during your stay at Te Mata House:

FB Te Mata House

IG @te_mata_house